

BRAZILIAN WATERWEED

Egeria densa



Brazilian Waterweed Leaves

Kristian Peters



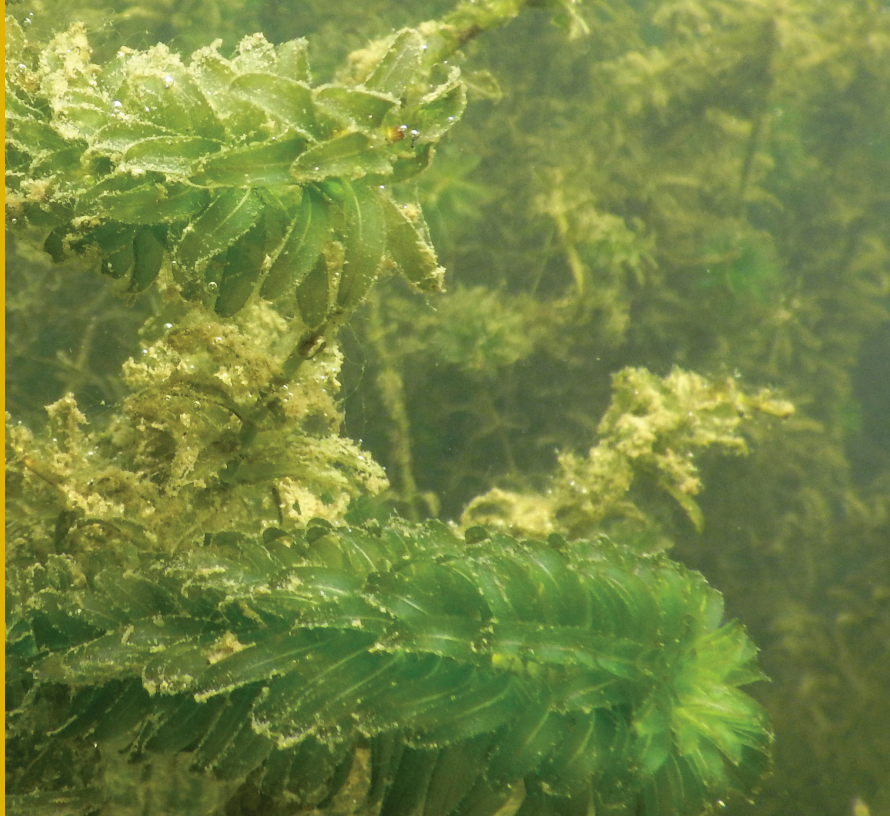
Brazilian Waterweed Flower

David Liu



Brazilian Waterweed Crosscut

Minnesota Aquatic Invasive Species Research Center



Lamiot, Wikipedia Commons

IDENTIFICATION

LIFE CYCLE:

Submerged aquatic perennial.

LEAVES:

Leaves are bright green, sessile, whorled, with finely toothed margins, and occur in groups of 4-6. Upper leaves are 15-40 mm in length and 2-5 mm in width. Lower leaves are opposite and scale-like.

FLOWER:

White, glossy, and wrinkled flowers emerge on the surface to 1.5 inches from the water. Flowers have three petals.

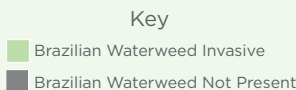
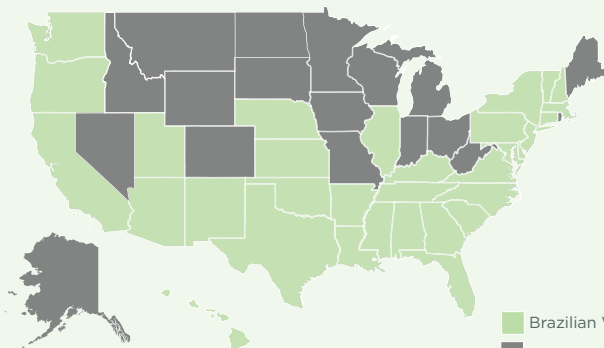
STEMS:

Like the leaves, stems are bright green in color. They easily break off and root on nodes.

For more detailed information on Protecting Montana Waters from Aquatic Invasive Species visit

<https://fwp.mt.gov/conservation/aquatic-invasive-species>

DISTRIBUTION Currently not found in Montana



Source:
USGS NAS, May 2023



Brazilian Waterweed

Minnesota Aquatic Invasive Species Research Center

HABITAT:

Submerged in water generally 1-2 meters deep, particular to warmer waters but will overwinter.

NATIVE TO:

Brazil, Argentina, and Uruguay

PREVENTION AND SPREAD:

Often these plants are introduced when contents of aquariums are not disposed of properly. Always dispose of aquarium items in a sealed bag. Once established, it spreads easily through fragmentation, so it is important to clean, drain, dry boats, waders, boots, and all angling gear before entering another water body.

IMPACTS:

Creates dense mats that make recreating more difficult. These mats can also clog water intakes, allows the plant to out-compete native aquatic vegetation, and alters habitat. Can also contribute to reduced water quality by creating an overabundance of nutrients in the water through increased oxygen intake.

IN MONTANA:

Not present in Montana

Sources:
UC Davis Weed Report, Montana Field Guide, NOAA,
Aquatic Invasive Species Threatening the Crown of the Continent book

NATIVE LOOKALIKES:

American or Broad waterweed, *Elodea canadensis*
The distinguishing characteristics of the native waterweed are dark spots on the leaves, and the leaves are longer and less wide than Brazilian waterweed.



Brazilian Waterweed
Egeria densa

Paul Skawinski, Aquatic Plants of the Upper Midwest



American Waterweed
Elodea canadensis

Paul Skawinski, Aquatic Plants of the Upper Midwest

If you see or suspect a new infestation of an invasive plant or animal, please save a specimen, and record the location.

Report observations to Montana Fish, Wildlife & Parks at
<https://fwp.mt.gov/conservation/aquatic-invasive-species/report-an-ais>
Or call the MT FWP front desk at 406-444-2440



1075 South Ave West | Missoula, MT 59801 | 406-258-4200 | www.missoulaeduplace.org