

FRAGRANT WATER LILY

Nymphaea odorata



Fragrant Water Lily Leaf

Paul Skawinski, Aquatic Plants of the Upper Midwest



Fragrant Water Lily Flower

Joseph LaForest, University of Georgia



Fragrant Water Lily Pink Flower

Graves Lovell, Alabama Dept of Conservation and Natural Resources



IDENTIFICATION

LIFE CYCLE:

Aquatic perennial

LEAVES:

Round in shape with one slit. Texture is thick and glossy. Green on the upper leaf and purplish red on the bottom. Leaf stalks can be green to reddish-purple.

FLOWER:

Floating with 17-43 white to pinkish petals and yellow stamens; petals are curved in the middle lengthwise. Flowers close at night and are very fragrant.

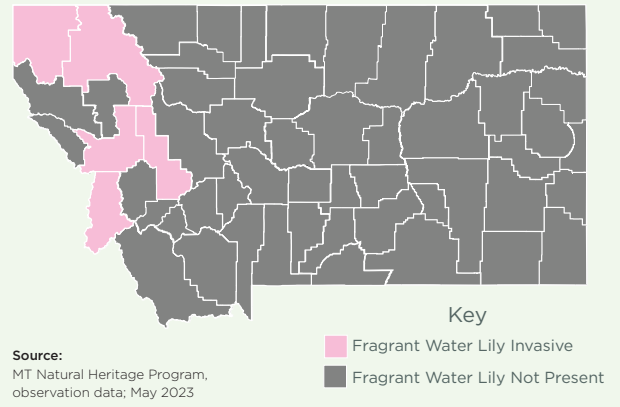
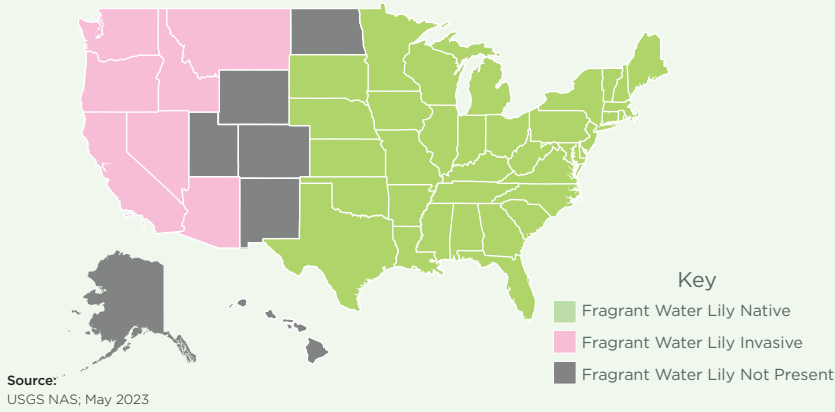
STEMS:

Flowers and leaves are attached to fleshy rhizomes that are long and branching underwater.

For more detailed information on Protecting Montana Waters from Aquatic Invasive Species visit

<https://fwp.mt.gov/conservation/aquatic-invasive-species>

DISTRIBUTION



HABITAT:

Acidic to alkaline lakes and ponds in valleys with a water depth of 3-6 feet. Leaves and flowers are floating.

NATIVE TO:

Eastern United States

PREVENTION AND SPREAD:

Introduced as an aquatic ornamental species, it has invaded the western US. Spread occurs by seed through waves and wind and rhizome pieces that break away. To prevent further invasion, avoid planting as an ornamental species and remove and dispose of any vegetation on boats, waders, or other equipment that has been in the water.

IMPACTS:

Create dense, floating mats that outcompete native plants, disrupts recreation, and can clog water pipes. Decreases water quality by contributing to nutrient loading and sedimentation and decreasing oxygen. Has been known to cause drownings in Washington state.

IN MONTANA:

Listed as a Noxious Weed in Missoula County.

Sources:
Washington State Noxious Weed Control Board
Montana Monthly Weed Post
Montana Field Guide, *Aquatic Invasive Species Threatening the Crown of the Continent*

NATIVE LOOKALIKES:

Pygmy Waterlily *Nymphaea leibergii*

Fragrant Water Lily can be distinguished from native pygmy waterlily by fragrant flowers, fewer petals, and smaller sepals. Fragrant Water Lily can be distinguished from *Brasenia* (watershield) by its split leaves and Yellow Pond-lily because the native pond lily has yellow flowers with inconspicuous petals.



Fragrant Water Lily
Nymphaea odorata

Paul Skawinski, Aquatic Plants of the Upper Midwest



Pygmy Waterlily
Nymphaea leibergii

Katy Chayka

If you see or suspect a new infestation of an invasive plant or animal, please save a specimen, and record the location.

Report observations to Montana Fish, Wildlife & Parks at
<https://fwp.mt.gov/conservation/aquatic-invasive-species/report-an-ais>
Or call the MT FWP front desk at 406-444-2440



1075 South Ave West | Missoula, MT 59801 | 406-258-4200 | www.missoulaeduplace.org